

RERA REGISTRATION NO :  
RC/REP/HARERA/GGM/868/600/2024/95 DATED 20.09.2024  
RC/REP/HARERA/GGM/869/601/2024/96 DATED 20.09.2024  
(WWW.HARYANARERA.GOV.IN)



AN ISO 9001:2015; 14001:2015; 45001:2018; 27001:2022 CERTIFIED COMPANY

**SIGNATURE GLOBAL BUSINESS PARK PRIVATE LIMITED | U70109DL2019PTC346164**

**Regd. off:** 13th Floor, Dr. Gopal Das Bhawan, 28, Barakhamba Road, Connaught Place, Central Delhi, New Delhi 110001

**Corp. Off.:** Unit No. 101, Ground Floor, Tower-A, Signature Tower South City-1, Gurugram, Haryana, India, 122001

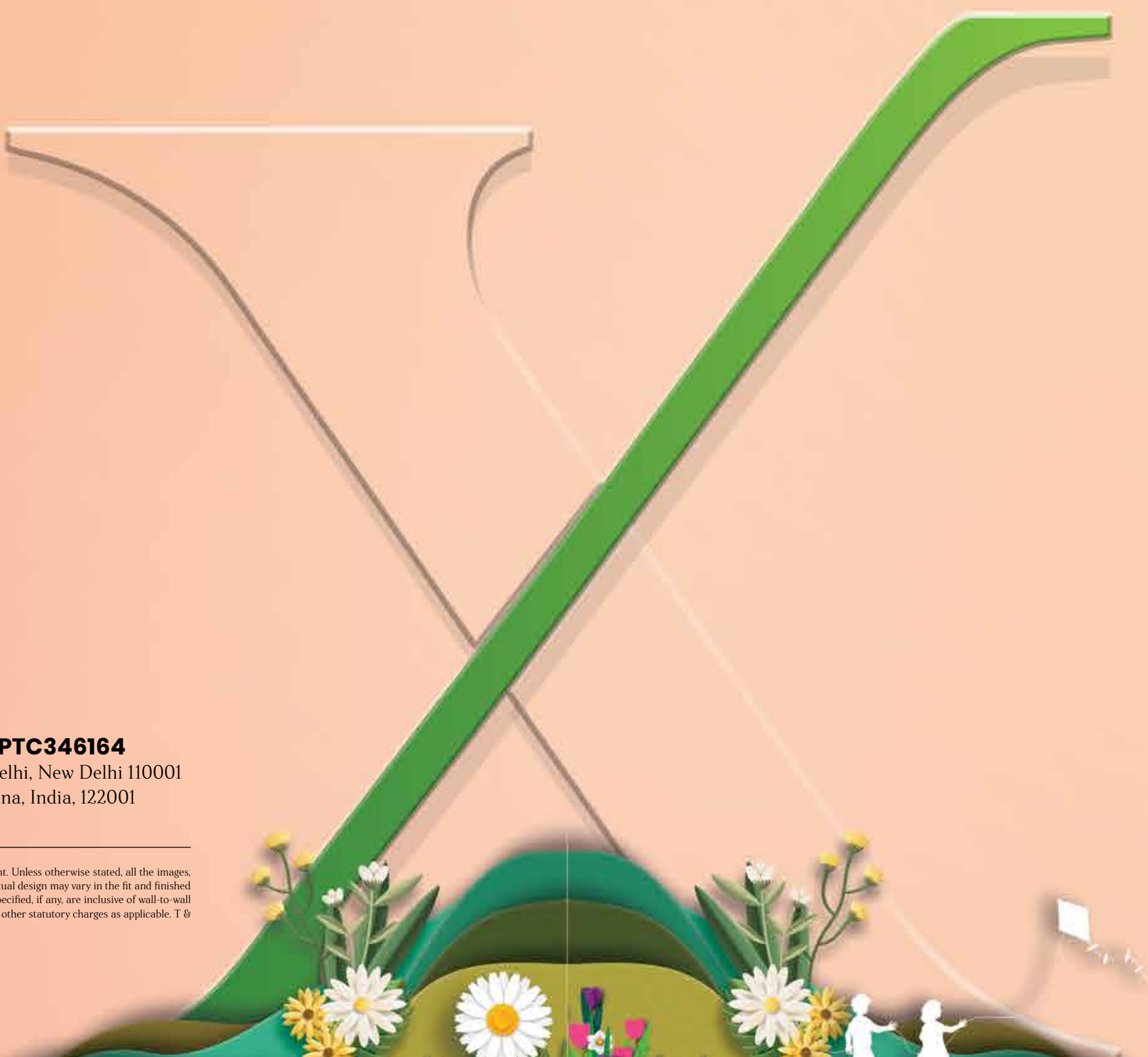
[www.signatureglobal.in](http://www.signatureglobal.in)

Disclaimer: Promoter urges every applicant to inspect the project site and, therefore, requests to make personal judgement prior to submitting an application for allotment. Unless otherwise stated, all the images, visuals, materials and information contained herein are purely creative/artistic and may not be actual representations of the product and/or any amenities. Further, the actual design may vary in the fit and finished form, from the one displayed above. Journey time shown, if any, is based upon Google Maps which may vary as per the traffic at a relevant point of time. The dimensions specified, if any, are inclusive of wall-to-wall measurements, excluding finishing margins. Potential offsets within rooms may occur due to structural elements. \*Rate mentioned above, if any, does not include GST and other statutory charges as applicable. T & C Apply. 1 sq. mt. = 10.7639 sq. ft.



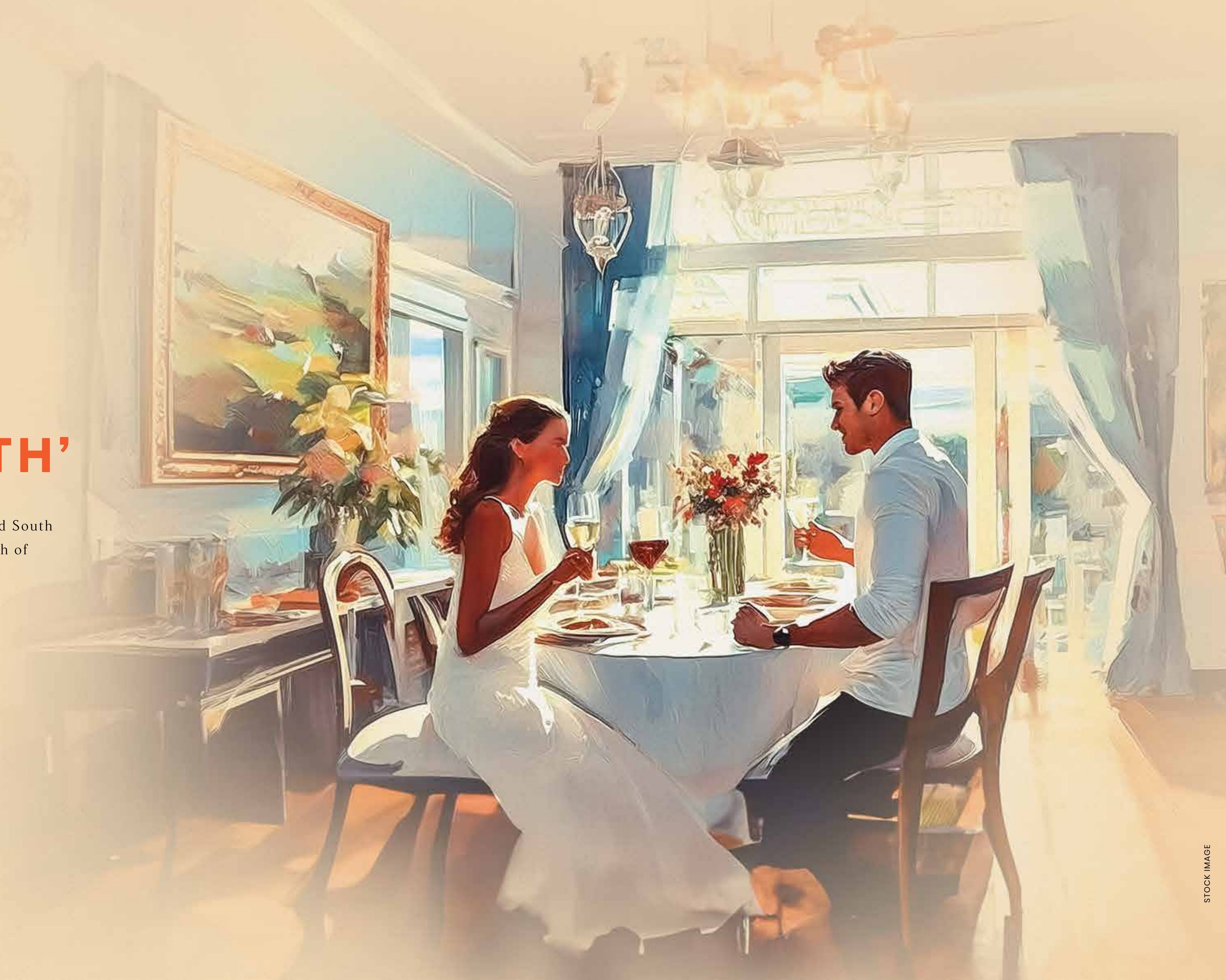
**Daxin**<sup>TM</sup>  
GURUGRAM'S X FACTOR

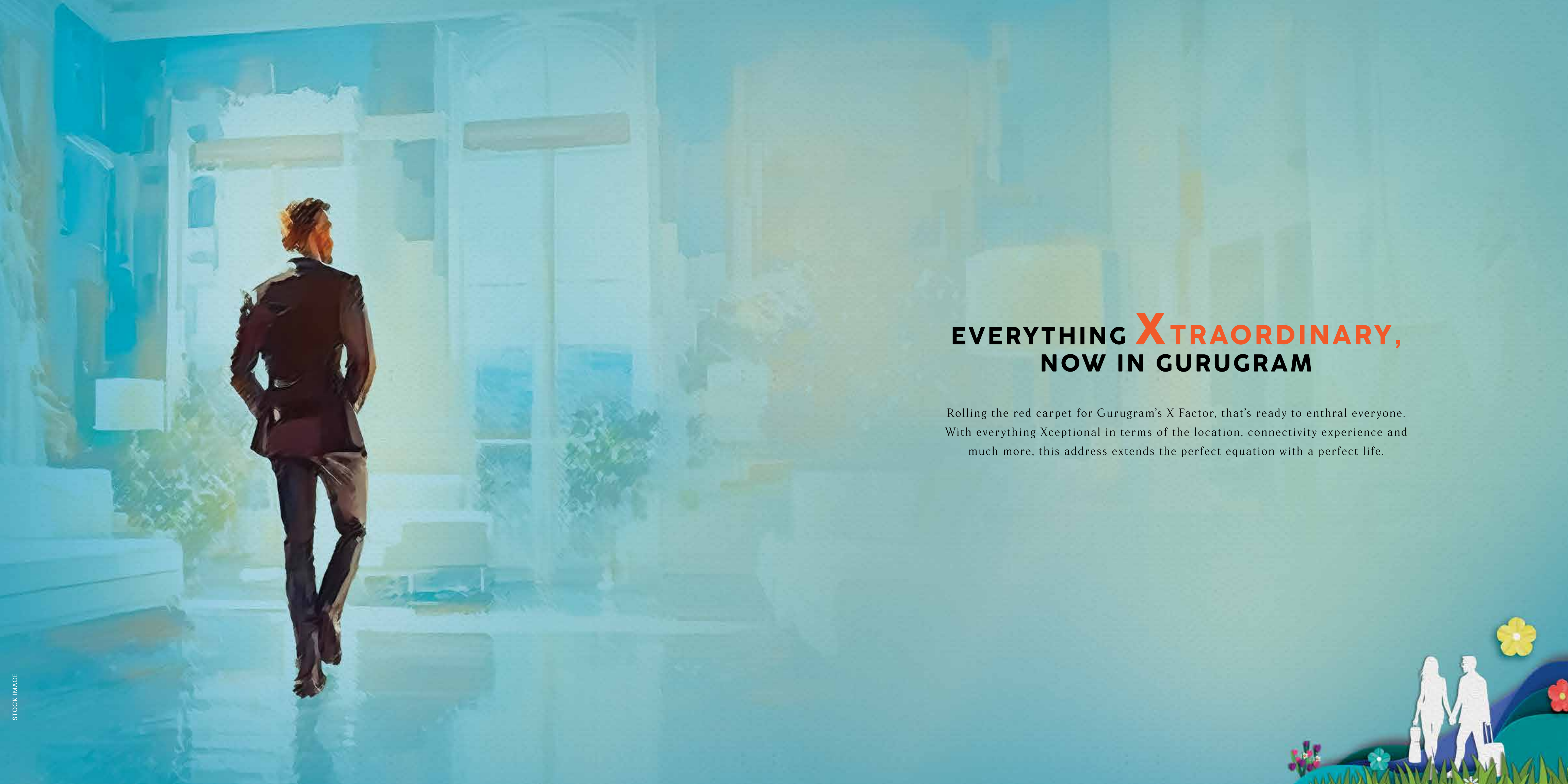
**DISCOVER THE PERFECT  
EQUATION OF LIFE**



# GIVE A NEW MEANING TO ‘THINGS GOING SOUTH’

Southern parts of many Tier 1 cities including South Delhi, South London and South Mumbai are reckoned as the poshest areas. Now is the turn to drape South of Gurugram with everything exceptional





## EVERYTHING **X**TRAORDINARY, NOW IN GURUGRAM

Rolling the red carpet for Gurugram's X Factor, that's ready to enthrall everyone. With everything Xceptional in terms of the location, connectivity experience and much more, this address extends the perfect equation with a perfect life.





**X** TRAORDINARY.  
CLUSIVE.  
CITING.

— Introducing —

**SIGNATURE GLOBAL**  
**Daxin**<sup>TM</sup>  
GURUGRAM'S X FACTOR

Welcome to a township that's Gurugram's most bustling address.



INDEPENDENT  
PREMIUM FLOORS



IT/ITES & HIGH STREET  
DISPLAY STORES



COMMERCIAL  
HUB



GRADE  
A+ SCHOOL

WHERE  
**EVERYTHING**  
DISTINGUISHED FINDS ITS AXIS



WHERE YOU CAN DIVIDE  
YOUR TIME INTO MULTIPLE  
**DELIGHTS**





WHERE GROWTH MULTIPLIES  
IN YOUR  
**INVESTMENT**  
PORTFOLIO



AND WHERE  
**JOY** IS ADDED AND  
**MONOTONY** IS  
SUBTRACTED





# ADD **C**ONVENIENCE, MULTIPLY **C**OMFORT

Nestled in the foothills of Aravallis, Daxin is enveloped by lush greenery and plush social infrastructure. Seamlessly connected to Gurugram - Sohna Elevated Road and bang on Delhi - Mumbai Industrial Corridor, the address offers a thriving business ecosystem for investments to bloom.



# ADD CONNECTIVITY, SUBTRACT COMMUTE

Nestled in a location that's embraced by landmarks, Daxin personifies the hallmark of connectivity. Commute hassle-free and spend quality time at your home care free.

## SURROUNDED BY MULTIPLE HOTSPOTS TO MULTIPLY CONVENIENCE



8 KM TO GOLF COURSE ROAD EXTN.



11 KM TO SUBHASH CHOWK



13 KM TO DWARKA EXPRESSWAY CLOVERLEAF



13 KM TO RAJIV CHOWK



30 KM TO IGI AIRPORT



RIGHT ON DELHI - MUMBAI INDUSTRIAL CORRIDOR



HASSLE-FREE DRIVE VIA GURUGRAM - SOHNA ELEVATED ROAD



## A SPACE DIVIDED AMONG **EVERY AGE GROUP** FOR FUN TO MULTIPLY

Nurturing every facet of life, Daxin is a blooming ecosystem for every generation. Whether it's kids, teenagers, millennials and senior citizens, everyone enjoys their innings with unrivalled delights. So, say hello to a life bustling with vibrancy and zeal across all age groups!





**NATURE FOUND ITS PEACE HERE.  
NOW IT'S YOUR TURN.**

Revel in lavish spreads of green that paint horizons with splendour. Enjoy a pulsating life in the heart of nature, while making serenity your new family member. With an environment that's pollution-free, pleasant and vibrant, indulge in freshness and fervour all year round.



**SURROUNDED BY**  
**ARAVALLI HILLS**  
**FOR BLISS TO ALWAYS**  
**GO UPHILL**





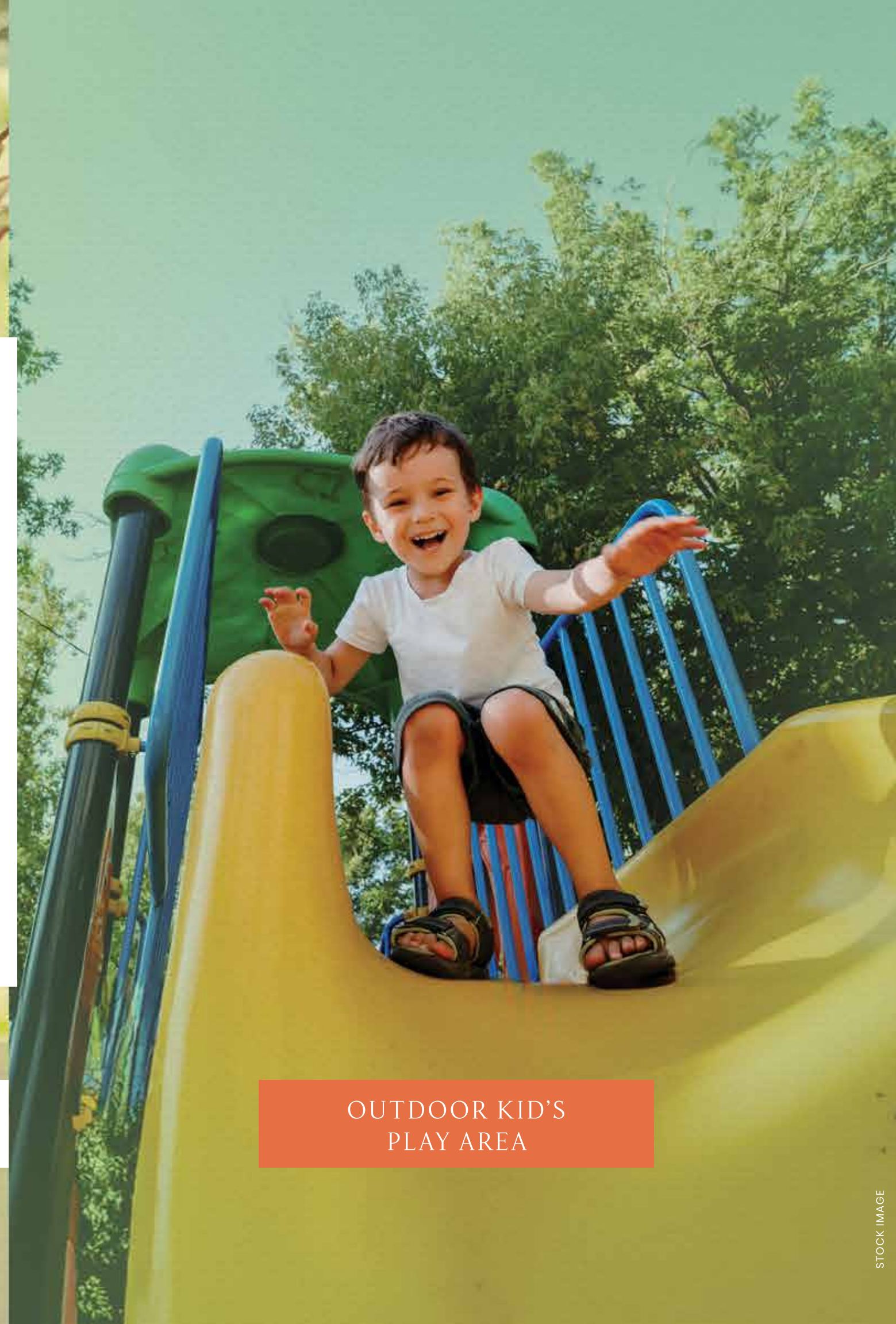
**SAFE AND STRESS-FREE FOR YOUR  
KID'S DELIGHT SPREE**

Watch your little ones laugh and play carefree in an environment that encourages nothing but positivity. Let them make cherished memories that they'd wish to live forever.





RECESSED PARK



OUTDOOR KID'S  
PLAY AREA



SAND PIT

**A LIFE, DIRECTED BY YOUR  
MOST EXCLUSIVE **W**ISHLISTS**

Unwind in a lifestyle that makes soothing experiences a daily routine.  
Engage in a host of amenities that are thoughtfully designed to make  
everyday a celebration.







STOCK IMAGE

YOGA DECKS



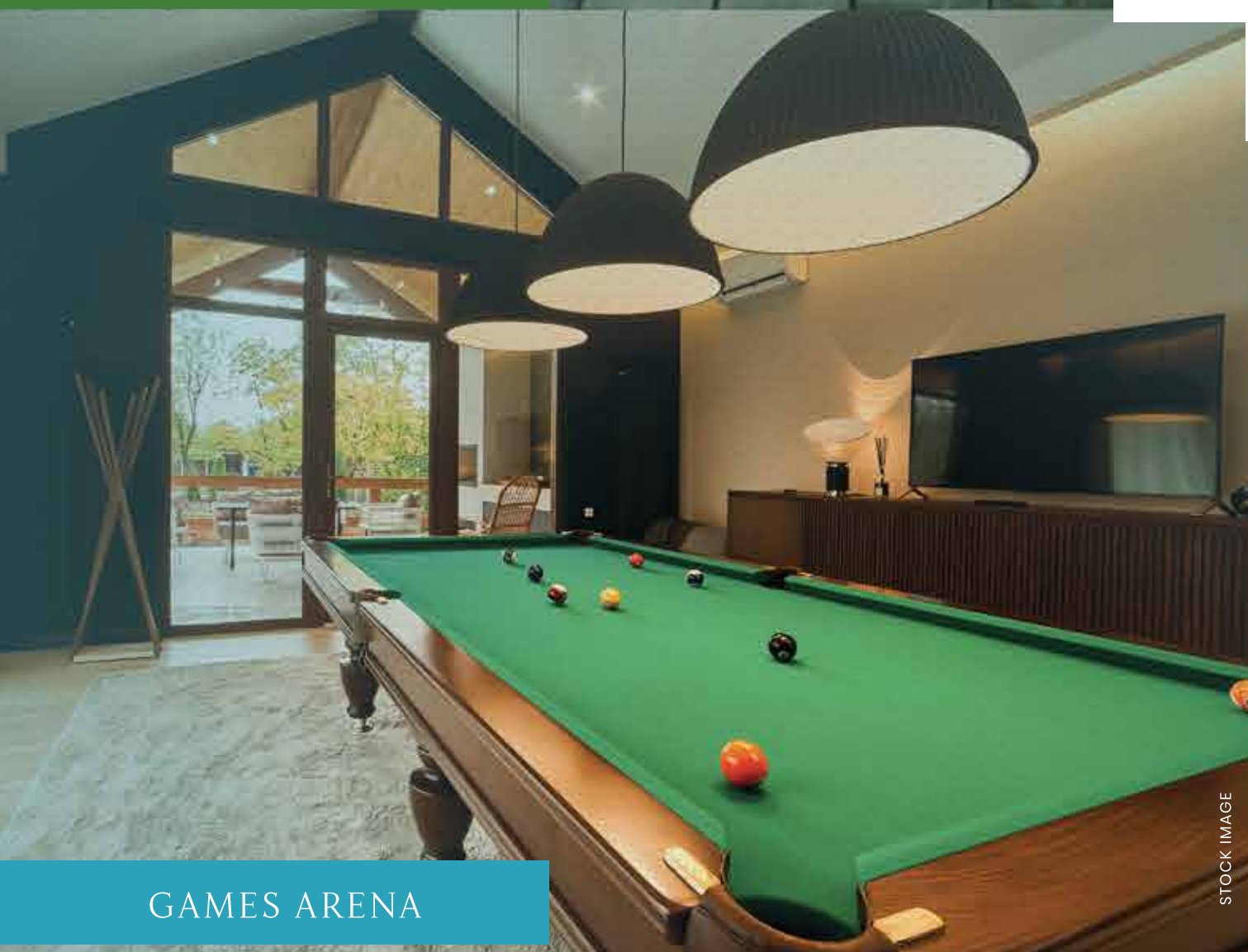
STOCK IMAGE

CO-WORKING SPACES



STOCK IMAGE

REFLEXOLOGY GARDEN



STOCK IMAGE

GAMES ARENA



STOCK IMAGE

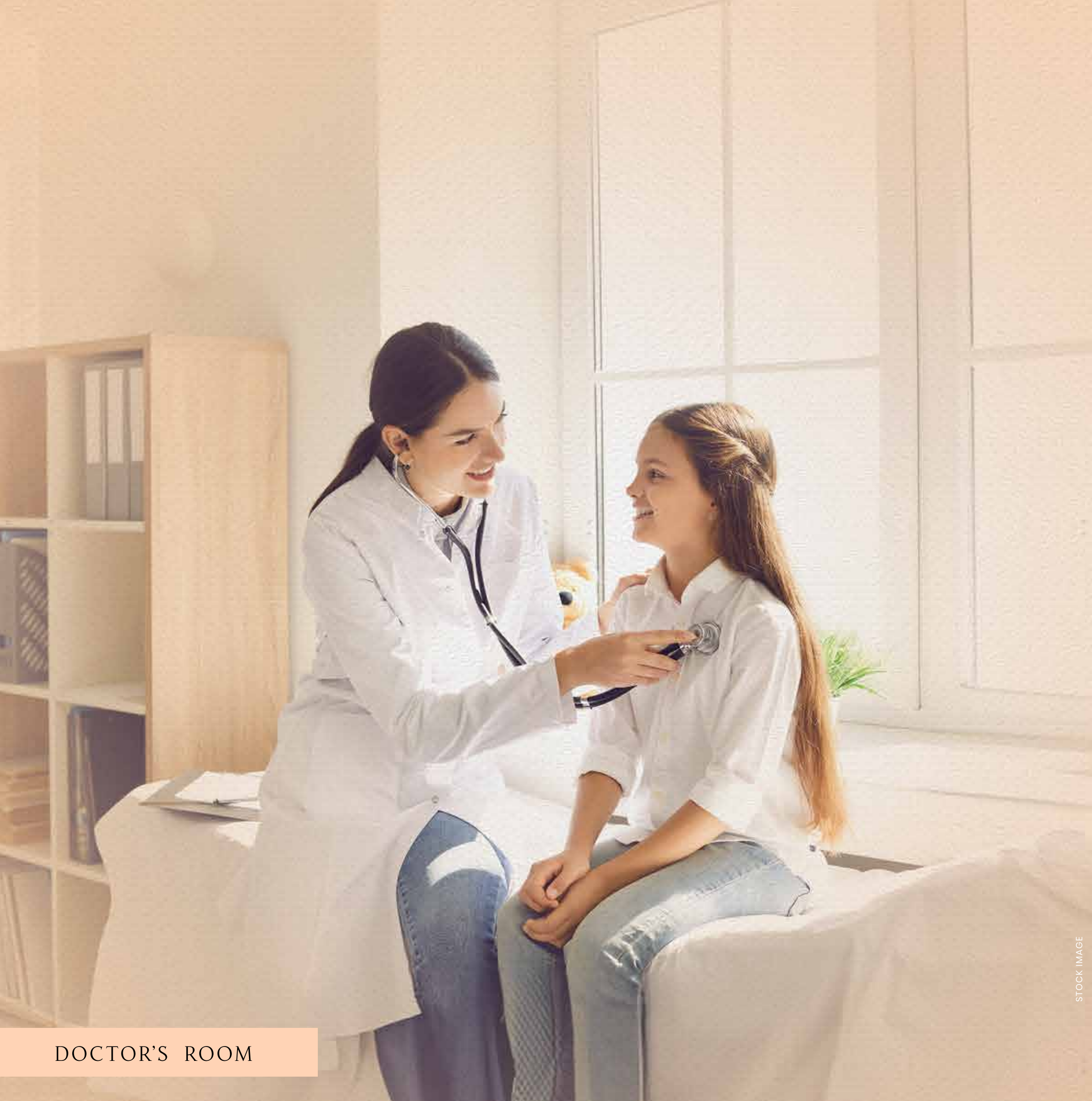
JOGGING TRACK



## DIAMOND MOMENTS FOR YOUR **GOLDEN INNINGS**

Daxin is all about going big on life, enjoyment and happiness! So, age like fine-wine in an address that helps you make timeless memories at every stage of life.





DOCTOR'S ROOM

STOCK IMAGE



WALKING PATHWAY

STOCK IMAGE



OUTDOOR SEATING

STOCK IMAGE

# LEISURE MULTIPLIED FOR YOUR FUN TO GET DIVIDED ACROSS

Add fond memories to your daily checklist as you bid monotony goodbye. With a host of leisure activities including shopping, entertainment, and dining, indulge in the merriest times of your life.





**THE BEST OF EDUCATION,  
RIGHT WHERE YOU LIVE**

At Daxin, 2 acres of space are dedicated to building A+ Premier School.  
Give your little ones the finest schooling while also subtracting the  
hassle of long commutes



— INTRODUCING —

# DAXIN VISTAS



**B+S+4** | **INDEPENDENT**  
**PREMIUM FLOORS**



ARTISTIC IMPRESSION

# SAFE. SECURE. **SPLENDID.** STRESS-FREE.

Feel worry-free the moment you step in! Stroll around the premises without stressing about safety and security. With a gated community featuring dedicated security and meticulously designed spaces, celebrate your peace of mind every day.







**HERE, A NATURE-BOUND ESCAPADE  
IS JUST A **B**ALCONY **A**WAY**

Pamper your senses and revel in magnificence amid lavish spreads of green. Let the lush green boulevards cast a soothing spell and help you find your inner peace.



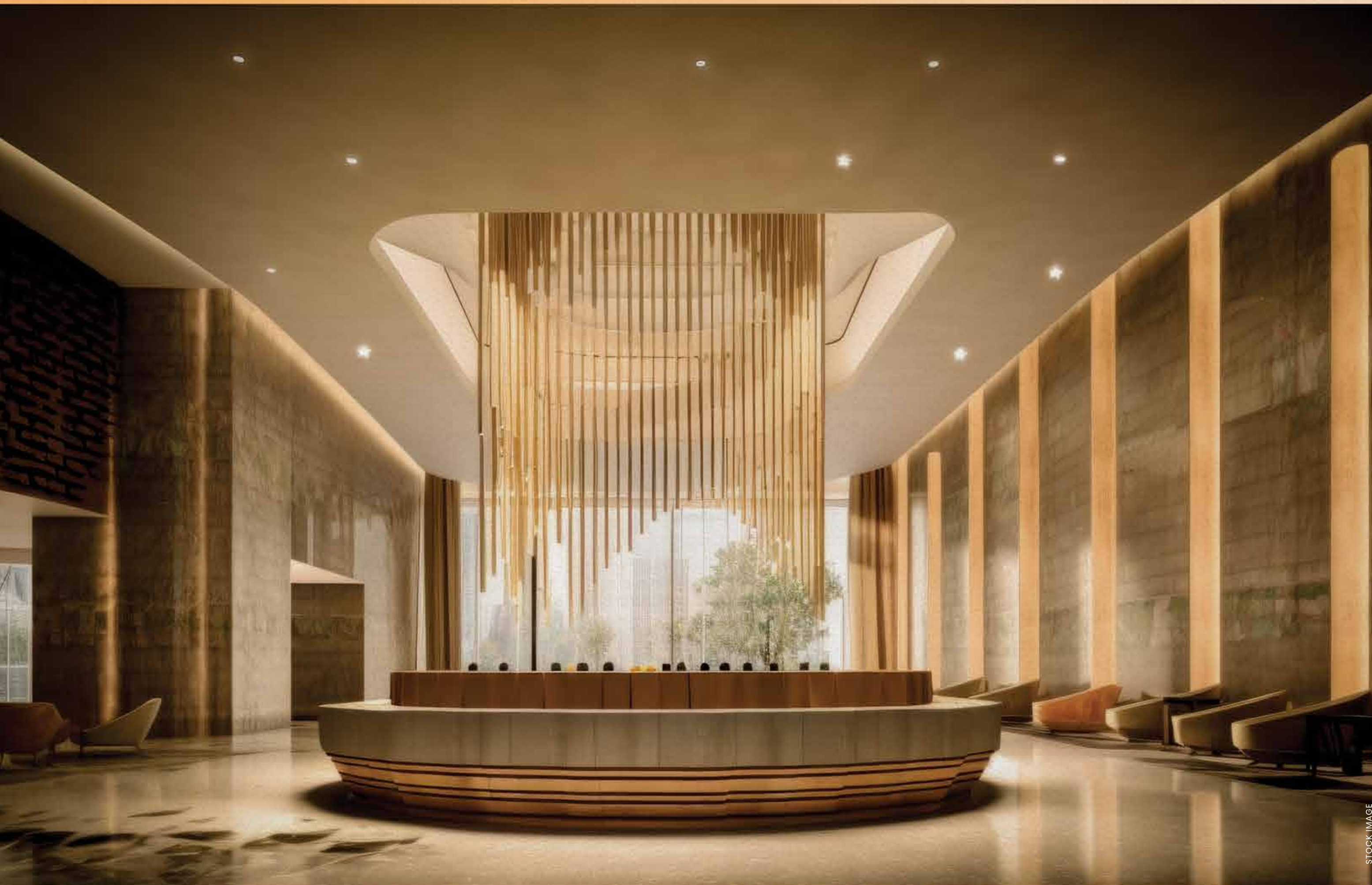
A CLUB EXPERIENCE  
LIKE NEVER BEFORE..

WELCOME TO

 Club  
**Anandam**  
BY SIGNATURE GLOBAL

Featuring your dreams, aspirations and the most  
outlandish wishlists





## AN ENTRANCE YOU'D WANT TO **F**LAUNT & **F**LEX **A**BOUT

Spectacular in form, spellbinding in finesse, the club's double-height entrance lobby is a class apart. Indulge in tasteful interiors and marvellous architecture that's sure to soothe your sight.

STOCK IMAGE



## Multi-purpose hall

Organise a celebration  
or host a meeting,  
all in our plush settings



## Gym

Where your  
workout outshines



## Spa and Salon

Indulge in a relaxing time  
with curated treatments



## Kids Indoor Play Area

Let your kids make  
outstanding memories, indoors

**DELIGHTS**  
**ALWAYS**  
**HAVE A**  
**HOUSEFUL**  
**HERE**



## Laundromat

Say hello to  
utmost convenience



## Mini Theatre

A mini silver screen  
experience for your golden moments



## E-library

Give your reading  
hobby a new narrative



STOCK IMAGE



STOCK IMAGE

## Miyawaki Forest

Reboot and boost  
your senses here



STOCK IMAGE

## Swimming Pool

Dive in moments,  
soaked with bliss

## Conference Room

Host your business meetings  
in ergonomic settings



STOCK IMAGE

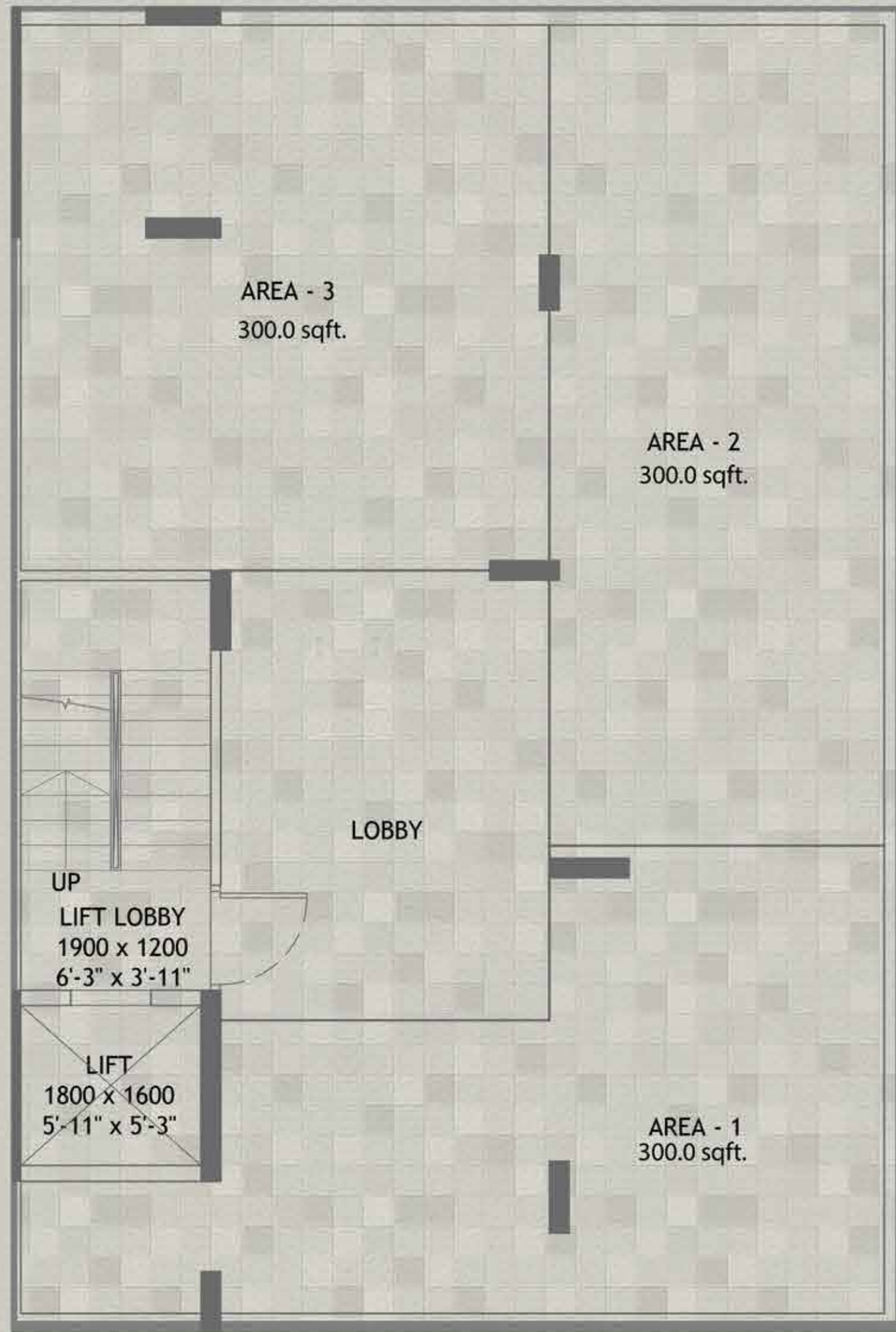
## Indoor Sports Facility

Amp up the champ  
in you

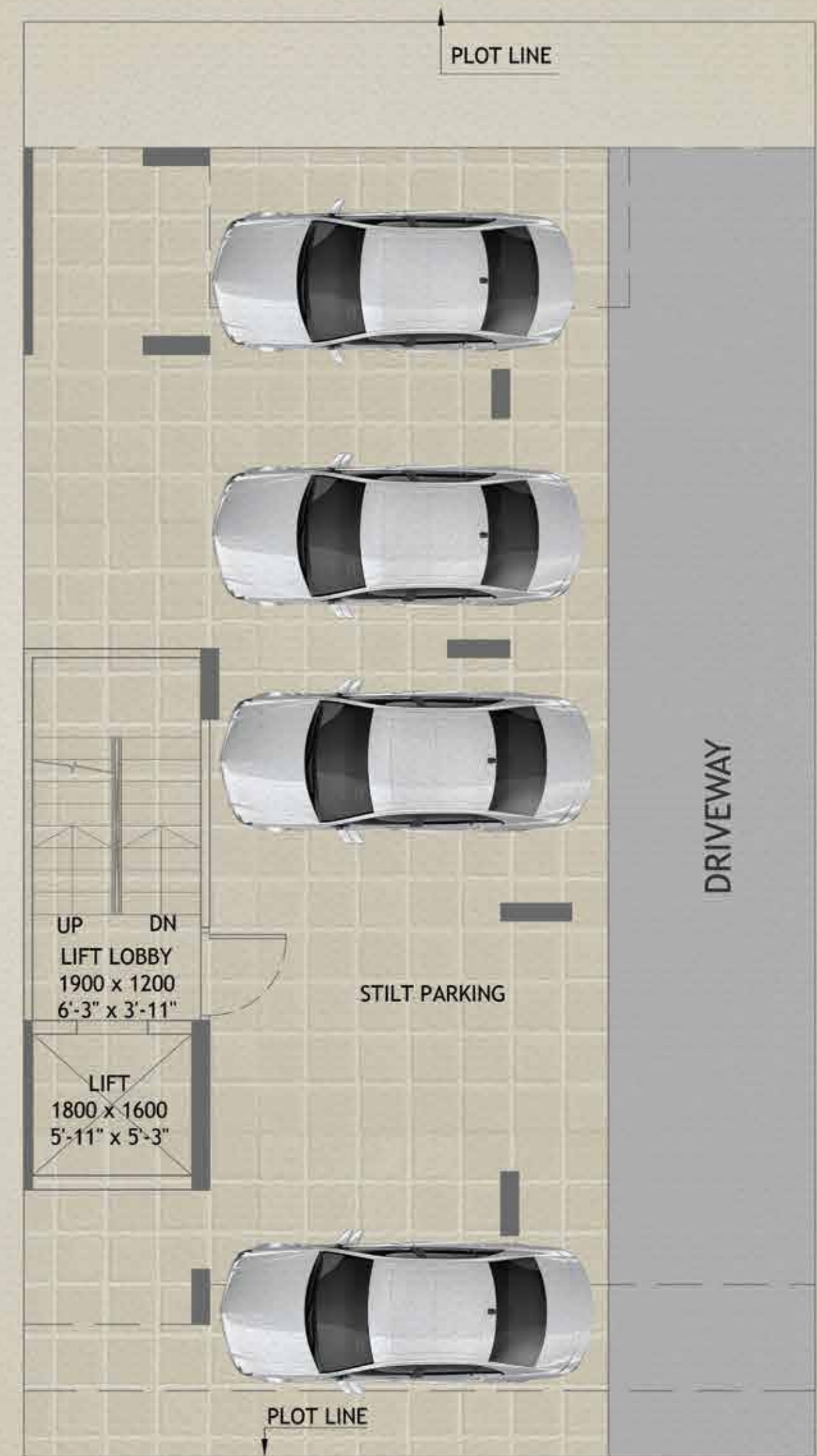


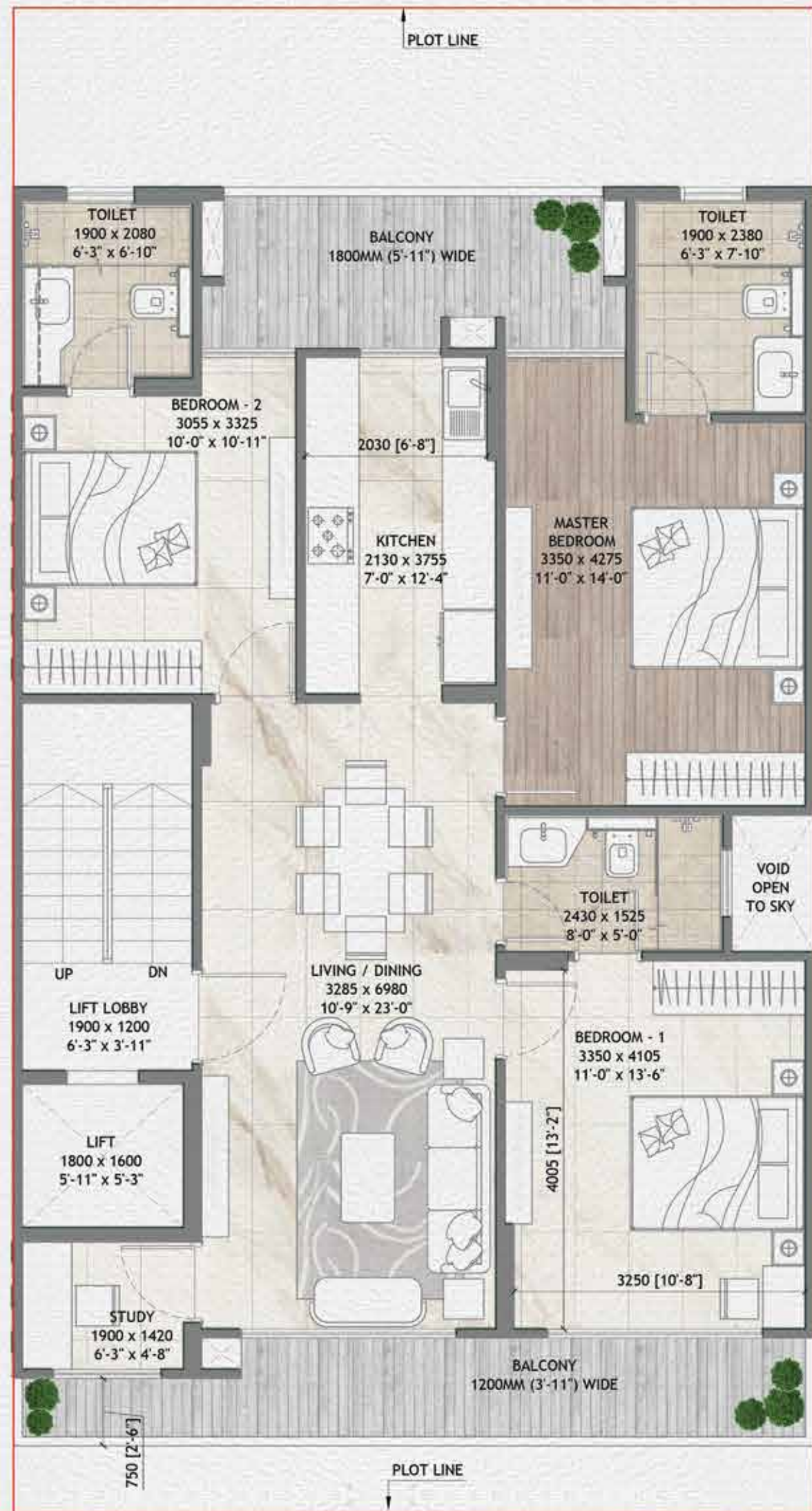
STOCK IMAGE

# BASEMENT PLAN



# STILT PLAN





# TYPICAL FLOOR PLAN TYPE A



# SPECIFICATIONS

## DRAWING / DINING ROOM

AC	AC in drawing area
Floor	Vitrified Tiles
Ceiling	Oil Bond Distemper
Wall	Acrylic Emulsion Paint

## BASEMENT

Furniture	Table, 3 Chairs & AC
Floor	Vitrified Tiles
Ceiling	Oil Bond Distemper
Wall	Acrylic Emulsion Paint

## MASTER BED ROOM

AC	AC in All Bedrooms
Floor	Laminated Wooden Flooring
Ceiling	Oil Bond Distemper
Wall	Acrylic Emulsion Paint

## BED ROOM

AC	AC in All Bedrooms
Floor	Vitrified Tiles
Ceiling	Oil Bond Distemper
Wall	Acrylic Emulsion Paint

## STUDY

Floor	Vitrified Tiles
Ceiling	Oil Bond Distemper
Wall	Acrylic Emulsion Paint

## KITCHEN

Wall Fittings	Modular Kitchen
Floor	Vitrified / Ceramic Tiles
Wall/Ceiling	Oil Bond Distemper Paint
Dado	Ceramic tiles 600mm above counter
Counter Top	Marble / Granite / Quartz
Fittings & Fixtures	“ISI marked CP Fittings & Single bowl with drain board sink”

## BALCONIES

Floor	AntiSkid / Matt Finish Ceramic Tiles
Railing	Glass / SS Railing

## TOILET & BATH

Floor	Anti Skid Ceramic Tiles
Wall	Ceramic Tiles
Ceiling	Grid False Ceiling
Fittings & Fixtures	ISI marked CP Fittings ,W.C & Washbasin

## DOORS & WINDOWS

Internal Doors Frame	Internal Doors Frame Hard Wood / Red Merandi
Internal Doors Shutter	Main Door - Both Side Laminated / Vineer
	Flush Door & Remaining Doors - both side Laminated / Paint finish Flush Door
External Doors & Windows	UPVC

## ELECTRICAL

Wiring	ISI Marked Electrical Wiring / Copper Electrical Wiring in Concealed Conduit for light point
Switches / Socket	ISI Marked Switches & Sockets

## TERRACE

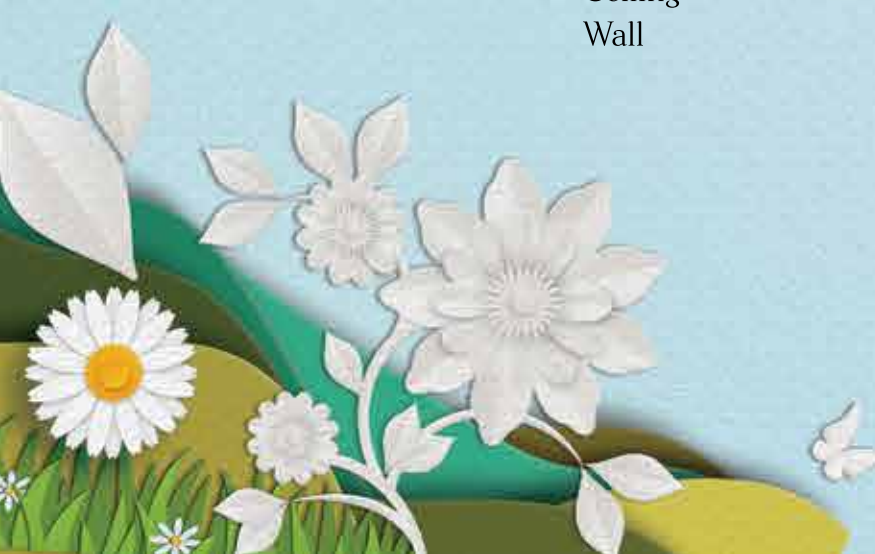
Water Proofing Treatment / Tile

## STRUCTURE

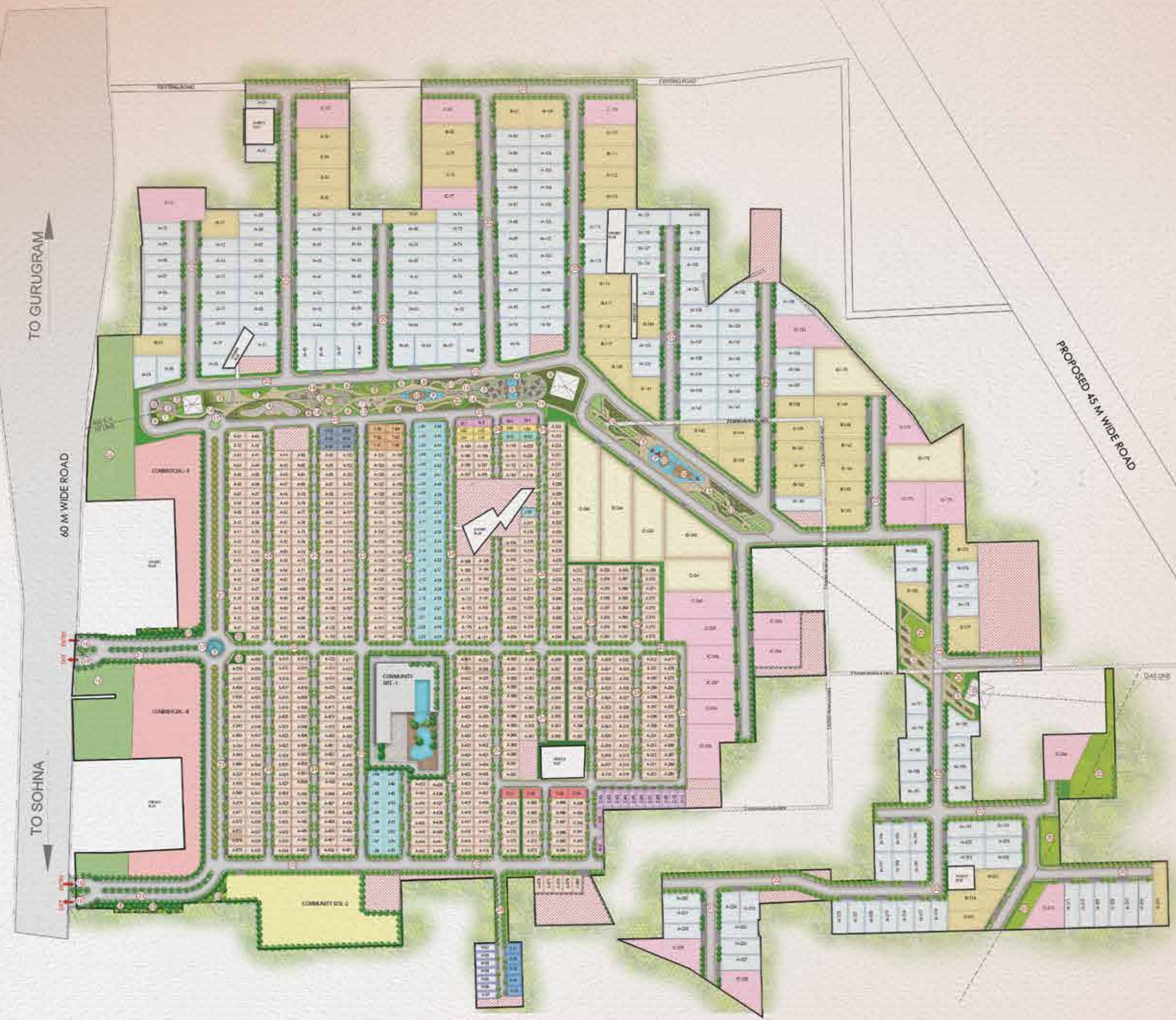
Earthquake - Resistant RCC Framed Structure as per Seismic Zone

## EXTERNAL DEVELOPMENT

Internal Roads	Tremix Concrete Road / Interlocking Blocks
Boundary Wall	RCC/Brick Wall with Plaster & External Weather Proof Paint Finish
External Facade	Weather Proof External Grade Paint







# ADD PEACE AND GREENS, SUBTRACT STRESS FROM YOUR LIFE

Connected to nature and the world, Daxin is a world of its own. Soothe your senses in lavish Green Boulevards adorned with exquisite gardens. With an array of amenities, make delight a permanent addition in your life.

- 01. YOGA AREA
- 02. PARKOUR AREA
- 03. MOUND
- 04. RECESSED PARK
- 05. SCULPTURAL GARDEN
- 06. PLANTING BOULEVARD
- 07. SAND PIT
- 08. NATURE COURT
- 09. LANDSCAPE FEATURE
- 10. PLAZA
- 11. REFLEXOLOGY GARDEN
- 12. OUTDOOR SEATING AREA
- 13. MIYAWAKI FOREST
- 14. JOGGING TRACK/ PATHWAY
- 15. SCENTED HEDGE GARDEN WALK
- 16. GREEN BELT
- 17. ROUND ABOUT
- 18. ENTRY GATE
- 19. EXIT GATE
- 20. LAWN
- 21. 24.0 M WIDE ROAD
- 22. 18.0 M WIDEROAD
- 23. 12.0 M WIDE ROAD
- 24. 9.0 M WIDE ROAD
- 25. BUTTERFLY GARDEN



ADDING BUSINESS SPACES,  
**M**ULTIPLYING **G**ROWTH

Daxin  
**Business  
Park**

is one-of-a-kind spaces where growth and prosperity thrives.  
Invest here to build display showrooms or IT plots  
and give your revenue a boom.



STOCK IMAGE



STOCK IMAGE

# PLOT YOUR INVESTMENT GROWTH AT THE TOP

Benefits of Having IT/ITES plots in this location and a township



JOB  
CREATION



LOCAL BUSINESS  
GROWTH



ATTRACTION OF  
INVESTMENT



MODERN  
FACILITIES



IMPROVED  
PUBLIC SERVICES



IMPROVED  
QUALITY OF LIFE



DIVERSE  
COMMUNITY



INCREASED  
PROPERTY VALUE





STOCK IMAGE

ENTERTAINMENT



STOCK IMAGE

DINING



STOCK IMAGE

SHOPPING

# AN OPPORTUNITY HAUL AT COMMERCIAL HUB

With a plethora of thoughtfully-designed opportunities such as shopping, dining and Cineplex, immerse in world-class experiences here. As an investor, let your growth upscale with investments that assure you of great returns.



# THE MASTERMINDS OF TOWNSHIP

## CONCEPT ARCHITECT

+ +

Aedas

+ +

One of the world's leading architectural firm based out of Singapore with 12 offices and 54 recognised projects

Architect  
Hafeez  
Contractor

40 Years  
ESTD. 1982

A visionary Indian architect renowned for transforming modern urban landscapes



## CONCEPT LANDSCAPE ARCHITECT

Coopers Hill is an international landscape architecture, urban design, landscape masterplanning and masterplanning consultancy, with offices in Singapore, Bangkok, Bali, Shanghai, Ho Chi Minh City and Dubai.



## LANDSCAPE ARCHITECT

Acclaimed for its holistic approach to design, integrating cutting-edge technology with cultural and contextual sensitivity



## LEAD ARCHITECT

A leading design firm celebrated for seamlessly blending contemporary aesthetics with sustainable architecture



## MEP CONSULTANT

Excels in blending architecture, engineering, and sustainability for high-performance, future-ready buildings



## STRUCTURE CONSULTANT

Renowned for its structural engineering expertise, delivering innovative and robust solutions for complex, large-scale projects

